



# HP<sup>®</sup>



**SELF DRILLING SCREWS  
DRY WALL SCREWS  
BLIND RIVETS  
ACCESSORIES**



[www.landmarkcrafts.in](http://www.landmarkcrafts.in)

Toll Free No. : 1800 891 7110

# ACCREDITATIONS



**MSME**

MICRO, SMALL & MEDIUM ENTERPRISES  
सूक्ष्म, लघु एवं मध्यम उद्यम  
OUR STRENGTH • हमारी शक्ति

Ministry of MSME, Govt. of India



ISO 9001 : 2015



Number: 86-391-8674

## QUALITY POLICY

To provide products and services which totally satisfy the requirements as defined by the customer who uses the product.

This policy requires each of us to demand excellence of each other and to pursue new processes and continuous improvement.

**We at Landmark Crafts Pvt. Ltd. are committed towards:**

- (a) Up graduation of Human Resources through imparting training and skills.
- (b) Timely Supplies to Customers : 98% times.
- (c) Improving Customer Satisfaction by reducing Customer Complaints : 0.5% annually.

**DIRECTOR**

# **ABOUT US**

Established in 1999, Landmark Crafts (P) Ltd., an ISO 9001:2015 accredited company is located at Anand Industrial Estate, Mohan Nagar, Ghaziabad, Uttar Pradesh (India). It is located next to New Delhi, Capital of India and enjoys convenient transportation.

Landmark Crafts (P) Ltd. is also rated SME-1 by CRISIL & is accredited by D&BD-U-N-S® Number: 86-391-8674

As one of the largest manufacturers of HP Self Drilling Screws, Aluminium Blind Rivets and Dry Wall Screws, the company is committed to achieve client's satisfaction by consistently meeting their specific requirements and timely delivery.

The company achieves this through continued training and adoption to new technology.

Landmark Crafts (P) Ltd. has two manufacturing units and currently employs around 60 senior technicians.

The factory at Anand Industrial Estate, Mohan Nagar (Ghaziabad) is engaged in manufacturing of Blind Rivets & Dry Wall Screws and the one at Panchkula (Haryana) is engaged in production of Self Drilling Screws.

---

## **VISION**

- To move towards our goal of being a world-class company.
- To engage in Sustainable Practices and anticipate the need of our customers.
- Try to maximise return while maintaining quality of our products.

## **MISSION**

To exceed our customers expectations in terms of quality, timely deliveries and cost through continuous improvement and customer interaction.

## **CORE VALUES**

Excellence, Teamwork and leadership define values of Landmark Crafts Pvt. Ltd. and that is how we conduct ourselves & our business.



## HP Self Drilling Screws

(#3) - For Cold Rolled Purlins

Material	Carbon Steel C1022
Head Type	Hex Head, Hex Flange Head
Available in :-	
Thickness	10 (4.8mm), 12(5.5mm), 14(6.3mm)
Length	19mm to 200mm
Drilling Capacity	upto 4mm
Available in	ZINC Plated & XYLAN Coated



## HP Self Drilling Screws

(#4, #5, #6) - For Hot Rolled Purlins

Material	Carbon Steel C1022
Head Type	Hex Head, Hex Flange Head
Available in :-	
Length	25mm / 35mm / 60mm / 65mm / 90mm / 120mm
Drilling Capacity	#4 (upto 8mm), #5 (upto 12mm)
	#6 (upto 16mm)
Available in	ZINC Plated & XYLAN Coated

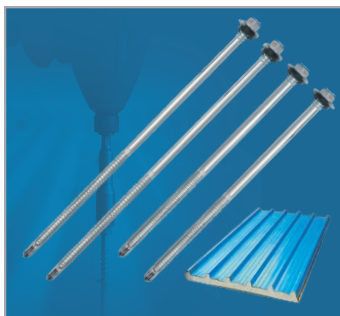


## HP Wing Self Drilling Screws

Fixing Cement Fiber & Asbestos Cement Roofing Sheets. Self-Drilling Screws & Sealing Washers are designed for fixing fiber cement & asbestos roofing sheets to both timber & metal.

They all come along with a big EPDM Washer also known as a Bowl Washer.

Material	Carbon Steel C1022
Head Type	Hex Head, Hex Flange Head
Available in :-	
Thickness	14(6.3mm)
Length	90mm/100mm/110mm
Available in	ZINC Plated & XYLAN Coated



## HP Screws for PUF Panels

PUF Panel is used for various applications like cold storage, prefab shelter, accommodation shelter, ripening chamber, porta cabin, clean room, control room, freezer room, insulated shed, wall cladding and many more.

Material	Carbon Steel C1022
Head Type	Hex Head, Hex Flange Head
Available in :-	
Length	90mm/100mm/120mm/135mm/150mm
	165mm/180mm/200mm
Available in	ZINC Plated & XYLAN Coated



## HP Dry Wall Screws

HP Dry Wall Screws feature a bugle shaped head which countersinks neatly into plasterboard without crushing the core or tearing the facepaper.

<b>Material</b>	Carbon Steel C1022
<b>Head Type</b>	Hex Head, Hex Flange Head
<b>Available in :-</b>	
<b>Thickness</b>	6(3.5mm)
<b>Length</b>	19mm, 25mm, 32mm, 38mm, 50mm
<b>Available in</b>	Black Phosphated & ZINC Plated



## HP Aluminium Blind Rivets

High shear and tensile strength.  
 Superior holding power (clam up).  
 Fastens over wide grip range.  
 Locking feature prevents loosening of material by vibration.

<b>Head Type</b>	Domed Head, CSK Head, Multigrip Rivets
<b>Available in :-</b>	
<b>Thickness</b>	1/8"(3.2mm), 5/32"(3.9mm), 3/16"(4.8)mm
<b>Length</b>	1.4"(7mm) to 1-1/4"(32mm)
<b>Available in</b>	Alu/MS, SS/SS



## HP Colour Head Screws

In house facility to im screws in various colors as per client requirements. Color Head Screws are used to match the roofing sheet color giving the structure an aesthetic look.

Available in : All HP range Screws

Colors Available : General roofing Sheet Colors or Customized.

---



## HP Big Flange Head Rivets

---



## HP Multi Grip Rivets

Available in : All HP range Rivets



## HP Pan Head Screws

A round head with a flat underside fully threaded for accurate clamping. Design for fixing metal surfaces. Driven with a phillips #2 Cross Recess Bit.

Material	Carbon Steel C1022
Available in :-	
Thickness	3.9 / 4.2mm
Length	13mm to 35mm
Available in	ZINC Plated & XYLAN Coated



## HP Wafer Head Screws

A versatile head style used to many fastening applications. The low head design eliminated the risk of dimpling the roof when the tradesperson walks on it. Driven with a #2 Cross Recess Bit.

Material	Carbon Steel C1022
Available in :-	
Thickness	3.9mm / 4.2mm / 4.8mm
Length	13mm to 50mm
Available in	ZINC Plated & XYLAN Coated



## HP Countersunk Head Screws

Originally designed for countersinking into timber for a flush or recessed finish. It can be used for industrial hinges and similar application. Driven with a phillips #2 Cross Recess Bit.

Material	Carbon Steel C1022
Available in :-	
Thickness	3.9mm / 4.2mm / 4.8mm
Length	13mm to 50mm
Available in	ZINC Plated & XYLAN Coated





## **HP PVC Colour Caps**

UV RESISTANT

---



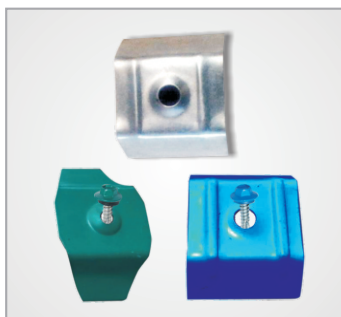
## **HP Metal Bonded Washers**

Available Sizes : 14mm / 16mm / 19mm

---

## **HP Bowl Washers**





## HP Lock

Corrugated Cyclone Assembly  
"For protection against high winds & cyclones"

All cyclone washer came along with seals. Available in 3 different sizes & types to match the various sheet profiles. These can be provided in desired colors also.

---

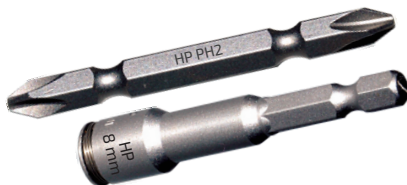


## Butyl Tape

HP Butyl waterproof tape is mainly made from butyl rubber. The features are excellent adherence time resistance waterproofing and easy to connect with different surfaces.

Available in : 2mm x 10mm x 22mtrs.

---



## Sockets & Phillips Bit

**Sockets :** For use with HP Hexagon Head Screws.  
Available in : 8 x 45mm, 8 x 65mm, 10 x 65mm

**Phillips Bit :** For use with HP Button, Wafer Head.  
Pan Head, Bugle Head, CSK Head Screws.



**2021-22**  
Target to achieve  
200 Crore turnover

**2018**  
Commission of  
Panchkula unit  
Production capacity  
enhanced to 400 tons

**2016**  
Baddi plant became  
fully operational

**2015**  
Installation of  
Heat Treatment Plant  
at Ghaziabad

**2009**  
Cross 1 crore mark

**2007**  
Started Landmark Crafts Pvt Ltd  
at Baddi Unit

**2002**  
Company name changed to  
Landmark Crafts Pvt Ltd

**1999**  
Started as Landmark Engineers



[www.landmarkcrafts.in](http://www.landmarkcrafts.in)

Toll Free No. : 1800 891 7110



## Landmark Crafts Pvt. Ltd.

An ISO 9001 : 2015 Certified Company

### REGD. OFFICE

251, Pocket-D, Dilshad Garden, Delhi-110095

### WORKS 1

Plot No. 24, Anand Industrial Estate, Mohan Nagar,  
Ghaziabad (U.P.) INDIA 201007 | Ph.: +91-120-4922683-85  
E-mail : hpscrews@gmail.com, hpscrew@landmarkcrafts.in

### WORKS 2

HBN-17, Global Industrial Park, Mouli, Village Golpura  
Tehsil Barwala, Panchkula, Haryana (INDIA) 134118

Customer Care No.: 9810331551

### BRANCHES

**AHMEDABAD**  
09974266521

**BANGALORE**  
09886186893

**BHOPAL**  
08819846507

**CHENNAI**  
07695999518

**DELHI**  
011-23212413

**HYDERABAD**  
09985086893

**KOLKATA**  
09836999164

**LUDHIANA**  
09876275630

**NAGPUR**  
08484916908

**PUNE**  
09975068123

**PATNA**  
0